

Reveal Systems TrueForms Software Online Plug-in Version 4.6.0.23

Below are the changes that have been made to the TrueForms IE add-on version 4.6.0.23.

Fixed: Templates so that the template list does not show .bak files.

Fixed: A problem with Delete template file. Templates will now delete.

Fixed: Issue with strikethrough not working if the zoom level was above 100%

Added: Set the sub-script mark to bold when adding addenda to a form.

Added: Error message if user attempts to upload a file larger than 10 megabytes

Added: Email Options to add From Email Address override. "Tools" menu "Options" select "Email Options"

Added: Email Options to add Email Signature. The signature will be displayed on emails sent from TrueForms Online. "Tools" menu "Options" select "Email Options"

Added: DocuSign auto log-in

Changed: When uploading documents to DocuSign TrueForms will now open the DocuSign envelope with the forms in the DocuSign email screen.

Fixed: Issue with emailing with an added addendum, the issue was some of the text would overflow the boundaries of the text field on the document when emailing.

Tools Email Options:

Email options have been added in this release. From the "Tools" menu select "Options" then "Email Options":

OPTIONS

... Editable Field Options
... Print Options
... Field SpeedFill Option
... Application Options
... SettlementRoom
... TransactionPoint
... SureClose
... Signatures
... Email Options

Email Options

Default Email From Address:

Override Default Email From Address with this address:

Default Email Signature:
TrueForms Support
support@revealsystems.com
303.500.1140

Notice: This message, as well as any attached document, contains information from xxxxxxxxxx, that is confidential and/or privileged, or may contain attorney work product. The information is intended only for the use of the addressee(s) above.

Add Default Signature to Emails:

OK Cancel Help

TrueForms 4.6.0.23 Email Window:

The email window has changed a little in 4.6.0.23. Clicking on the "To" button will show any email address that are in the current transaction.

Who the email is sent from

Email address of recipient

Subject of Email if not provide the subject will be "Email from TrueForms Online"

Select Forms to Send with this Email...

TestTransaction

- Transaction Summary Sheet - Listing
- FAR-9 FAR Residential Sale & Purchase Contract
- AA-1 Auction Addendum to Purchase and Sale Contract

Forms in the current transactions, select the forms to send.

To send all forms select the transaction name folder at the top

To Send specific forms select the form for more than one use your ctrl key to select multiple

Enter the Email Message Body

TrueForms Support
support@revealsystems.com
303.500.1140

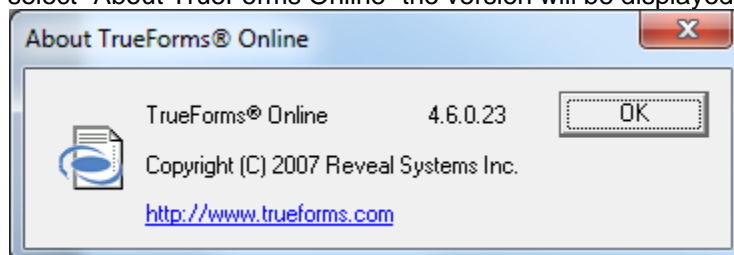
Email Message body, type any additional text into this area.

Notice: This message, as well as any attached document, contains information from xxxxxxxx, that is confidential and/or privileged, or may contain attorney work product. The information is intended only for the use of the addressee(s) above.

Add Signature Send Email Cancel

TrueForms Online how to tell which version

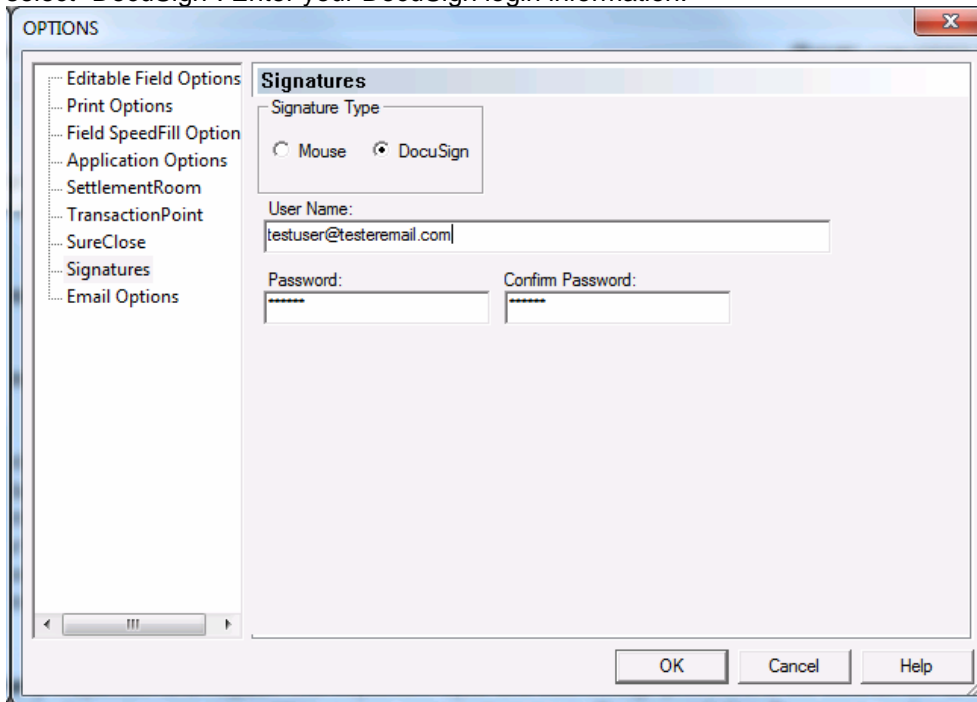
How to determine which version of the plug-in/add-on is installed. In TrueForms click on the "Help" menu and select "About TrueForms Online" the version will be displayed.



TrueForms Online and Desktop version 4.6.0.23 DocuSign

TrueForms allows DocuSign clients to upload forms for e-signature right out of the program you do not need the DocuSign printer installed to do this; however the DocuSign printer will still work with TrueForms.

The first step in using the DocuSign and TrueForms integration is to setup your DocuSign login information in TrueForms. Click on the **“Tools”** menu and select **“Options”** click on **“Signatures”** select **“DocuSign”**. Enter your DocuSign login information:

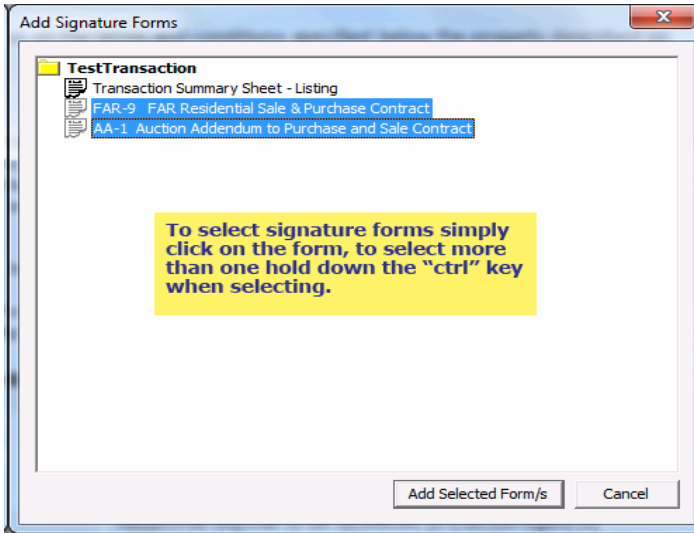


The screenshot shows the 'OPTIONS' dialog box with the 'Signatures' tab selected. The 'Signature Type' section has 'DocuSign' selected with a radio button. The 'User Name' field contains 'testuser@testeremail.com'. The 'Password' and 'Confirm Password' fields are masked with asterisks. The dialog box has 'OK', 'Cancel', and 'Help' buttons at the bottom right.

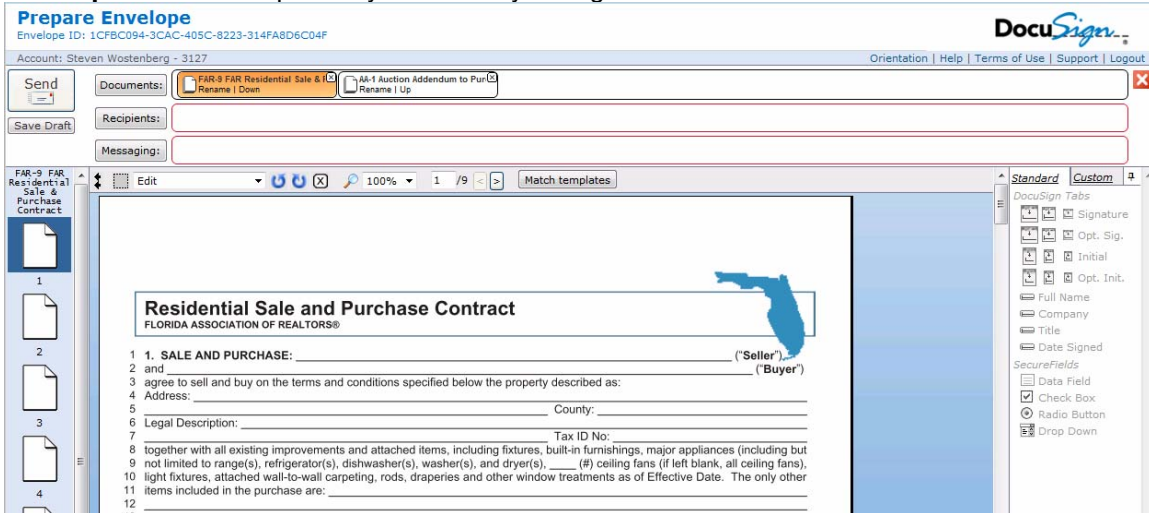
Once this is setup you can use the Icon on the TrueForms tool bar to automatically log-in to your DocuSign account:



When you are ready to send a document to DocuSign click on the **“Transaction”** menu and select **“Add Signature form”**. Select the document(s) to send and click on **“Add Selected Forms”**.



Now the Forms are ready to be sent up to DocuSign. Click on the **“Transactions”** menu and select **“Signatures”** then **“Upload Doc for e-signatures”**. At the Upload Signature Documents window you can enter a subject and message these are now optional click on **“Upload Documents”** once the upload is complete your DocuSign account will open with the **“Prepare Envelope”** screen setup. Now you can set your signature blocks and send.



From within TrueForms you can prepare the signature line blocks. Before uploading to DocuSign double clicking on the **“Double click to esign”** tags in the document and entering in the signers Name, Initials and Email address. You have to do this for each initial and signing field. Once you are done Upload the doc for e-signatures.

*NOTE: some DocuSign accounts are not setup for use with TrueForms if you are unable to set your DocuSign username and password you will need to contact DocuSign to enable this. If you do not have the **“Signatures”** option in the Tools and Options screen contact TrueForms support support@revealsystems.com

Note to Administrators:

TrueForms and Formulator Online are 32bit applications all Internet Explorer add-on files are installed to:

Windows 32bit computers

"C:\program files\reveal\trueforms\online" or "C:\program files\reveal\Formulator\online".

Windows 64bit computers

TrueForms:

"C:\program files (x86)\reveal\trueforms\online"

Formulator

"C:\program files (x86)\reveal\Formulator\online".

TrueForms and Formulator 4.6 no longer require the Microsoft Visual Studio Run Time Libraries (VCRedist) to be installed. It is recommended that you give all users Read:Write:Modify permissions on the installation folder so that plug-in updates can be installed. TrueForms and Formulator 4.6 version no longer require a firewall port to be open, the 4.6 version uses http for transfer on default port 80.

TrueForms and Formulator 4.6 will not run on Windows 2000 computers, for Windows 2000 computers you will need to install:

Online Plug-in:

TrueForms Windows 2000 plug-in:

<http://updates.trueforms.com/downloads/TFOL4542SQL.exe>

This can also be found at <http://www.trueforms.com/support/> click number 7

The TFLauncher.dll located in the installation folder is the Active X control that launches the TrueForms and Formulator Online programs. This file can be manually registered by running:

Windows 32bit computers

TrueForms

regsvr32 "C:\program files\reveal\trueforms\online\tflauncher.dll"

Formulator

regsvr32 "C:\program files\reveal\formulator\online\tflauncher.dll"

When installing this on Vista and Windows 7 run the command prompt as admin.

Windows 64bit computers

TrueForms

regsvr32 "C:\program files (x86)\reveal\trueforms\online\tflauncher.dll"

Formulator

regsvr32 "C:\program files (x86)\reveal\formulator\online\tflauncher.dll"
When installing this on Vista and Windows 7 run the command prompt as admin.

Creating a short cut to TrueFormsOnline.com

Right click on the Desktop and select "New" then "Shortcut" Paste the line below:

32bit Systems

"C:\Program Files\Internet Explorer\iexplore.exe" http://www.trueformsonline.com/sites2/

64bit Systems

"C:\Program Files (x86)\Internet Explorer\iexplore.exe" http://www.trueformsonline.com/sites2/

*creating the short cut like the above on 64 bit systems will ensure that the correct IE browser is used when using TrueForms and Formulator.

TrueForms Install Instructions:

http://www.trueformsonline.com/help/support_InstallAdd-on.html